



PRI AT LIGHTHOUSE POINT
4211 N FEDERAL HIGHWAY
POMPANO BEACH, FL

Sheet Title
TREE
DISPOSITION
PLAN

Revision Dates

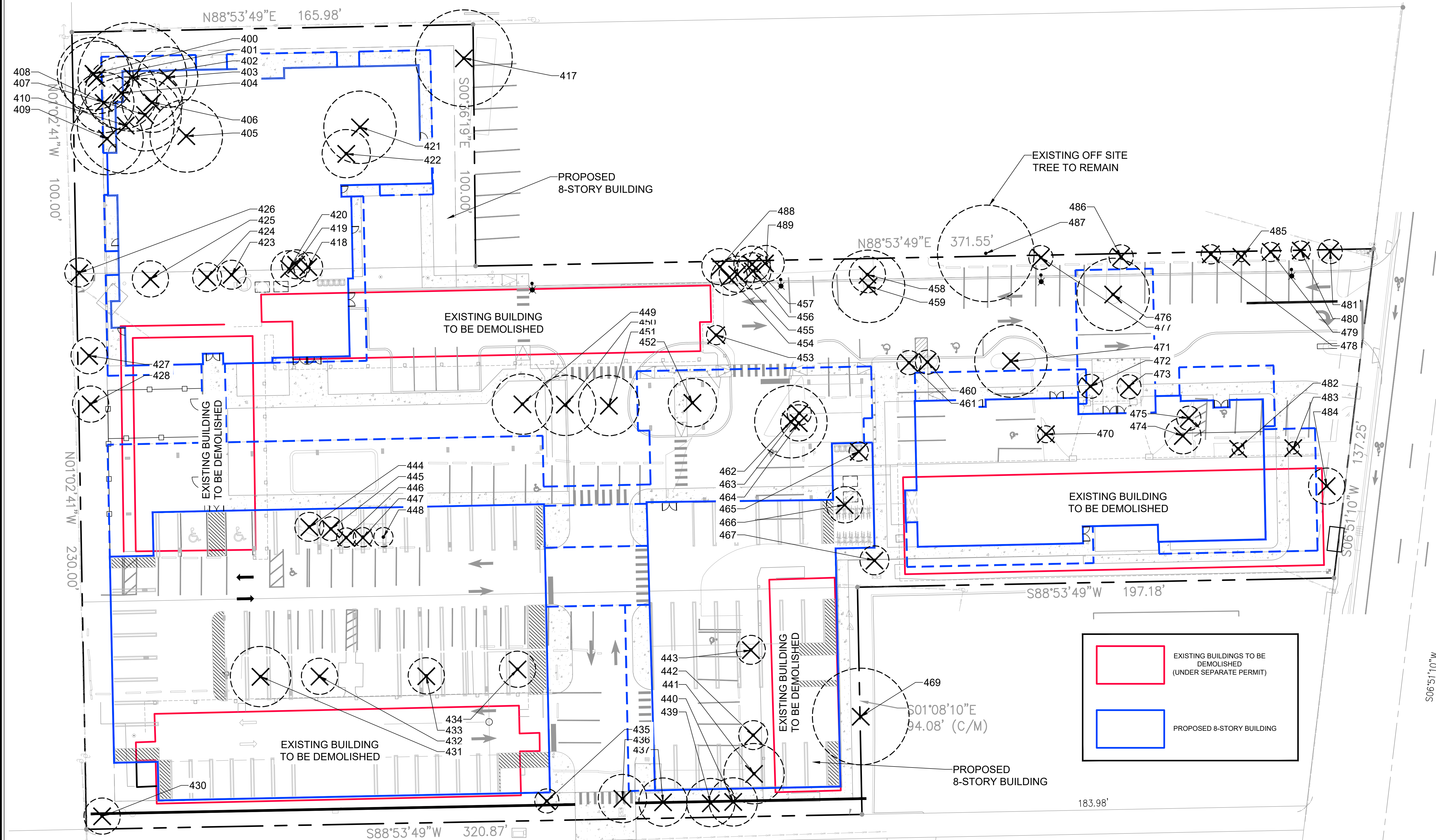
■ Date ■
8/25/2025




Sheet Number

L-1

Sea

STEPHEN M FECCIA, PLA
LA 6667289



TREE DISPOSITION LEGEND	
 <p>CANOPY</p> <p>001</p>	EXISTING TREE TO REMAIN
 <p>001</p>	EXISTING TREE TO BE REMOVED
 <p>R</p> <p>001</p>	EXISTING TREE TO BE RELOCATED (SEE PLANTING PLAN FOR LOCATIONS)

TREE DISPOSITION SUMMARY	
TREES TO BE REMOVED	10 TREES
PALMS TO BE REMOVED	58 PALMS
TOTAL DBH TO BE REMOVED	119 INCHES

NOTE: DEAD AND INVASIVE TREES NOT INCLUDED IN CALCULATIONS

TREE MITIGATION SUMMARY		
	REQUIRED	PROVIDED
TREE REPLACEMENT	101 INCHES	104 INCHES ((26) 4" CAL TREES)
PALM REPLACEMENT	58 PALMS	58 PALMS (AM, BN, PR, PS, RR, SP)
VALUE REPLACEMENT FOR SPECIMEN TREE 476	\$3,413	\$3,750 (PU)

NOTES:

1. TREE MITIGATION WAS CALCULATED PER SECTION 155.5204 E OF THE LAND DEVELOPMENT CODE
2. MITIGATION TREE AND PALM LOCATIONS AND SPECIFICATIONS SHOWN ON LANDSCAPE PLANS
3. SPECIMEN TREE VALUE DETERMINED PER THE TRUNK FORMULA METHOD TREE APPRAISAL. SEE ATTACHED TREE APPRAISALS.
4. SPECIMEN TREE REPLACEMENT VALUE WAS CALCULATED AS FOLLOWS
 (1) SCREW PINE (14HT) = \$1,500 RETAIL X 2.5 MULTIPLIER = \$3,750 EA = \$3,750
5. PROPOSED TREES USED TO MEET TREE MITIGATION REQUIREMENTS IS THE 85 TREES/PALMS ABOVE AND BEYOND DEVELOPMENT REQUIREMENTS. SEE REQUIRED TREE CALCULATIONS ON SHEET L-4.

PLANT SCHEDULE

<u>CODE</u>	<u>COMMON NAME</u>	<u>PALM TREES</u>	
		<u>BN</u>	Bismarck Palm
<u>TREES</u>			
<u>TD</u>	Bald Cypress	AM	Christmas Palm
BS	Gumbo Limbo	PR	Pygmy Date Palm
LJ	Ligustrum	RR	Royal Palm
CS	Orange Geiger Tree	SP	Sabal Palm
TH	Pink Tabebuia	PS	Sylvester Date Palm
PU	Screw Pine		
QV	Southern Live Oak		

SEE SHEET L-4 FOR FULL PLANTING SCHEDULE



Know what's **below**.
Call before you dig.



SCALE: 1" = 20'

10/01/2025